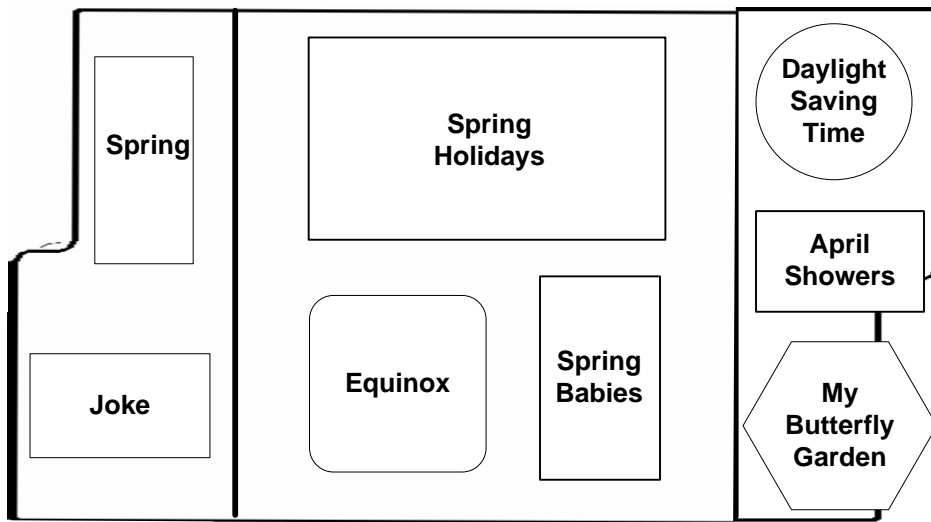
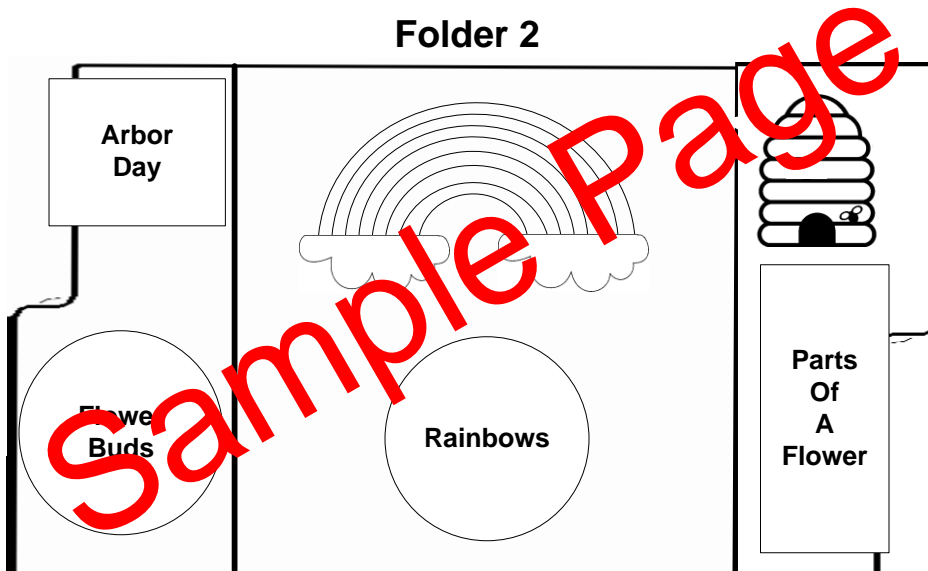


Layout of booklets in each folder

Folder 1



Folder 2



Folder 3

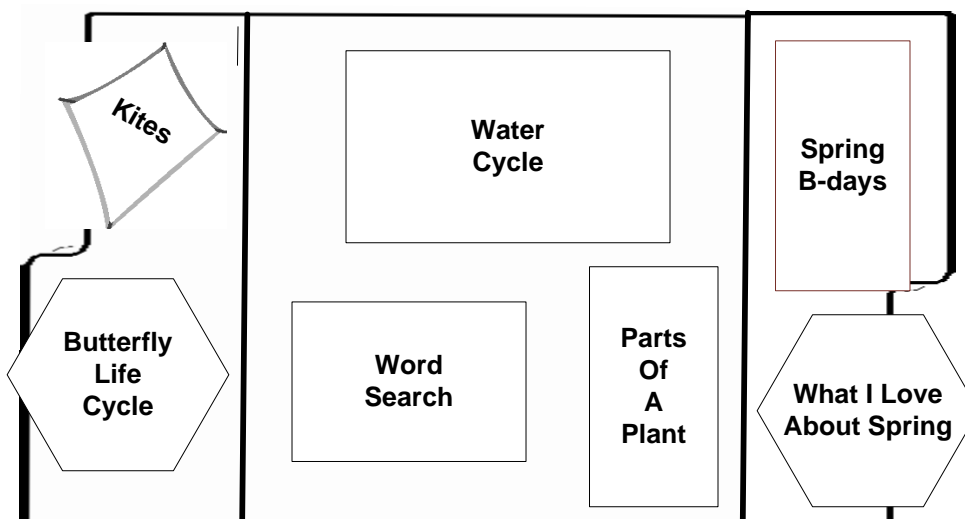




Table of Contents

When Is Spring and
How Do We Know It Has Arrived?

Spring Joke

St. Patrick's Day

April Fool's Day

Easter

Passover

Mother's Day

Memorial Day

Vernal (Spring) Equinox

Spring Babies-Bunnies, Lambs and Chicks

Daylight Saving Time

What Do April Showers Bring?

My Butterfly Garden

Arbor Day

Flower Buds

Rainbows

Honey Bees

Parts of A Flower

Kites

The Butterfly

The Rain Cycle

Spring Word Search

Parts of A Plant

Spring Birthdays

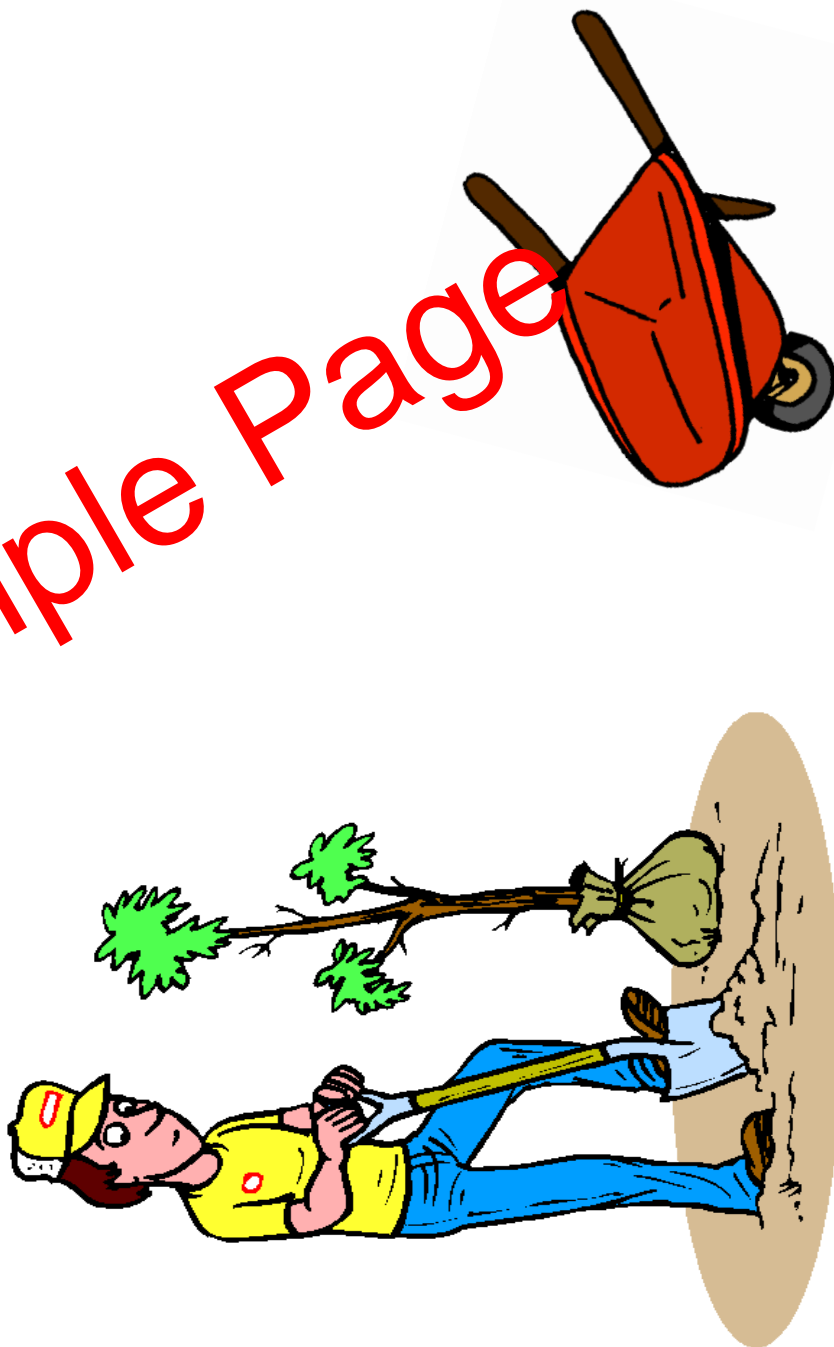
What I Love About Spring!

Complete the scene-

It is spring and this man is working in his garden. Complete the garden scene by adding flowers, grass, bees, birds, shrubs, a sun, watering can, and anything else you would like to add! Have fun and be creative! Cut off this piece and glue scene onto front of lapbook.

Spring

Sample Page



When is Spring and How Do We Know It Has Arrived?

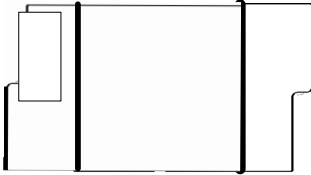
Spring is one of the four seasons. Spring marks the transition from winter into summer. In the Northern Hemisphere, spring usually begins on March 20 and ends June 21.

In the Southern Hemisphere, spring usually begins on September 21 and ends December 21. As spring approaches, the Earth's axis tilts toward the sun and the length of daylight grows longer. The winter snow begins melting and temperatures begin rising.

The first signs of spring are easy to identify. It begins with the first glimpse of a blossoming buds, the building of a new bird's nest, the smell of fresh rains, and the laughter of children flying their first kite. Spring is seen as a time of new life and growth for both plants and animals.



Folder 1



Cut out each piece. Stack them on top of each other according to length with title page on front and staple at the top. Read **When is Spring and How Do We Know It Has Arrived?** Answer the questions.

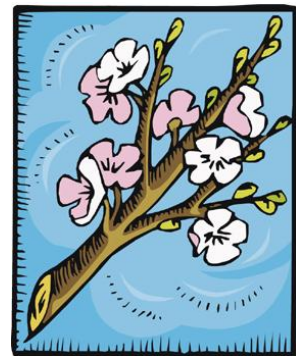
Sample Page

What are the first signs of spring?

When does spring begin and end in the Northern Hemisphere?

As spring approaches, how does the Earth tilt?

Spring

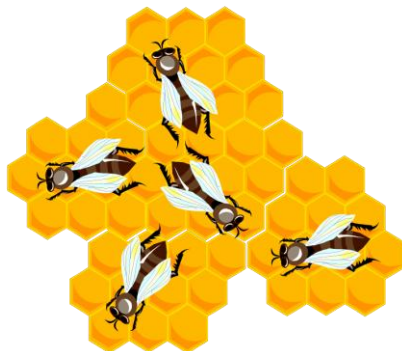


Honey Bees

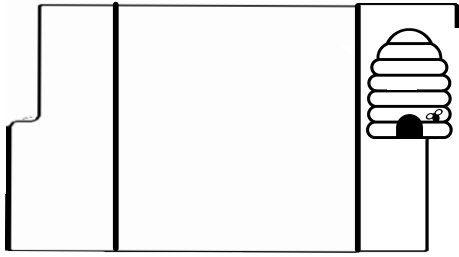
Honey bees are known for their production and storage of honey. They are one of the true signs that spring has arrived. A group of bees is called a colony. A colony generally contains one queen bee, a fertile female, a few thousand drone bees, and a large population of female worker bees. The Queen bee can live for 3 – 5 years. She can lay up to 2000 eggs per day. All worker bees are female, but they cannot lay eggs. They only live for around nine months. It is said that they really do work themselves to death. Drone bees are the male bees. The Drone bees do not have stingers. They are used only for mating. Each hive usually has about 3,000 drones.

Worker bees produce and form honeycombs using wax from their mouths. The bees lay their eggs in a single cell of the honeycomb. Bee eggs are called larvae. They usually hatch in three to four days. The eggs are cared for and fed by worker bees. They stay in the cell until they are fully developed.

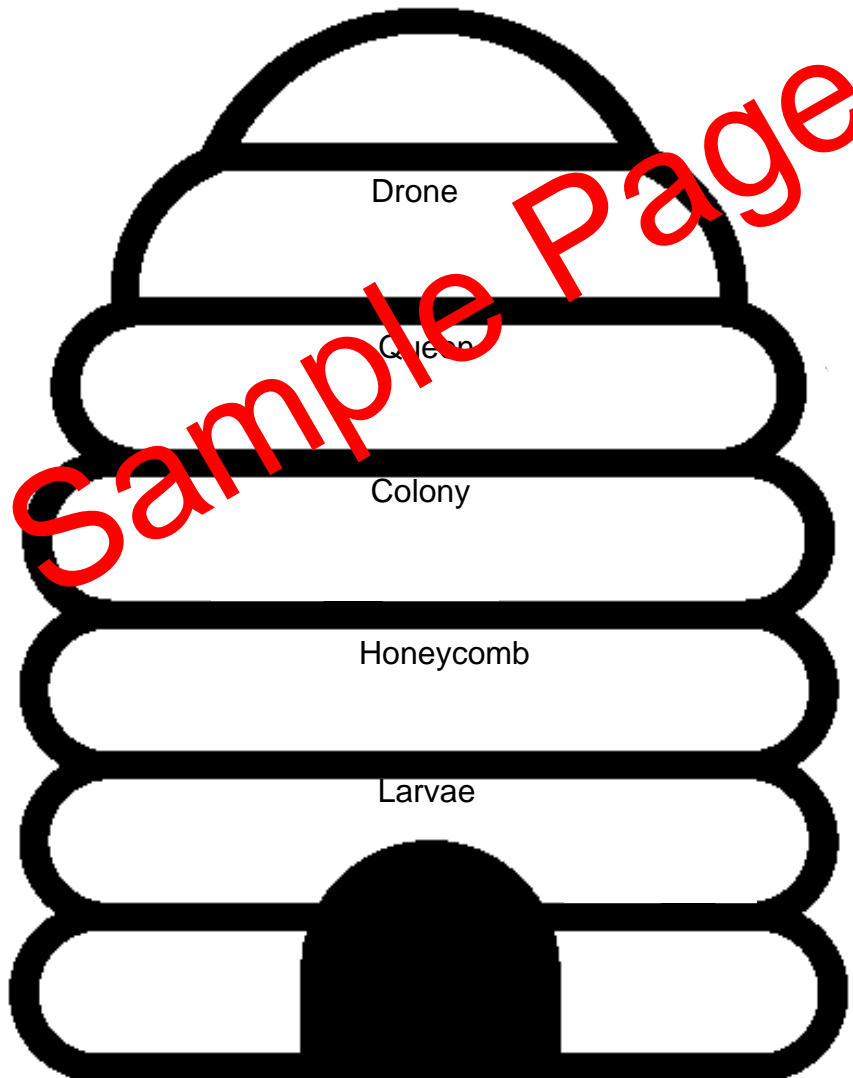
Once the larva pupates, the cells are capped off by the worker bees. There may be tens of thousands of bees living in a single colony. Young worker bees clean the hive and feed the larvae. Older worker bees are the ones that collect nectar and pollen. They also guard the hive. Bees communicate with each other in a pattern of "dancing" known as the bee dance or waggle dance. This dance communicates information regarding resources from one bee to the others.



Folder 2



Cut out the hive. Glue into lapbook. Read **Honey Bees**. Write the meaning of each word underneath the word.



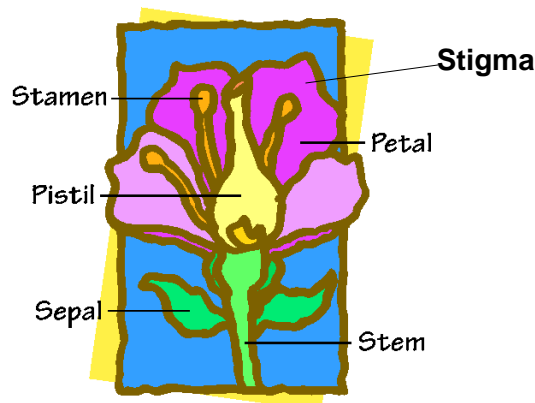
The Parts of a Flower

As soon as the snow begins to melt and the weather warms, we begin to see the true signs of spring. Flowers are a wonderful part of God's world. Flowers have several parts.

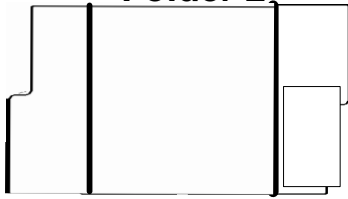
- * Sepal-Green and leafy. Protects the bud.
- * Petal-The colorful part of the flower. Attracts insects.
- * Pistil-Female part. Consists of the stigma, style, and ovary.
- * Stamen-Male part. Contains the filament and anther. Produces pollen.
- * Stigma-Sticky bulbous part on top of pistil.
- * Stem-Supports the flower. Holds it up high for insects.

Flowers are produced from a fertilized seed. Fertilization takes place when pollen from the male stamen is carried to the female part of the flower, the pistil.

Pollination is done by insects. Insects are attracted to plants by their bright petals and the sweet smell of the flowers. They land on the flower to drink the nectar, a sweet liquid found in the flower. While on the flower, the insect touches the stamen and pollen sticks to its feet. The insect then flies to other flowers, spreading the pollen around. Pollen is transferred to the pistil. Pollination leads to the making of one or more seeds in a flower. Wind carries seeds to different locations. Animals and even people aid in the relocation and scattering of seeds.



Folder 2



Cut out both pieces. (The smaller piece is the cover label) Hotdog fold the bigger piece in half. Glue cover label on top of big piece while it is folded closed. Glue into lapbook. Read **The Parts of a Flower**. Write the names of the flower parts in the boxes.

A large diagram of a flower with six empty boxes for labeling its parts. The flower is purple and yellow. A red 'Sample Page' watermark is overlaid diagonally across the diagram. The boxes are arranged as follows: three on the left and three on the right. Lines connect the boxes to the corresponding parts of the flower: the top-left box points to the center of the flower, the middle-left box points to the petals, the bottom-left box points to the stem, the top-right box points to the center of the flower, the middle-right box points to the petals, and the bottom-right box points to the stem.

A smaller diagram of a flower with the text "What are the parts of a flower?" written vertically next to it. The text is in green. The flower is purple and yellow.

Cover label